

# Certification of electrical products

CB Certification - International certification - *C by Apave mark*

Enhance the value of your investments in conformity testing by requesting certification for your products

You are a manufacturer and want access to the international market, or showcase the reliability of your products and set yourself apart from the competition.

Apave Certification provides you with support for the certification of your products in France and abroad.

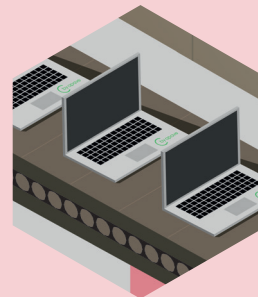
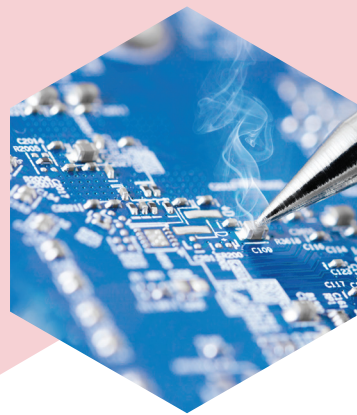


## Applicable products

- **Household electrical appliances**  
*IEC / EN 60335-1, IEC / EN 60335-2-XX*
- **Medical and paramedical electrical equipment**  
*IEC / EN 60601-1, IEC / EN 60601-2-XX*
- **Luminaires**  
*IEC / EN 60598-1, IEC / EN 60598-2-XX*
- **Audio/video, information and communication technology equipment**  
*IEC / EN 60950-1, IEC/EN 62368-1*
- **Electrical equipment for measurement, control and laboratory use**  
*IEC / EN 61010-1*

## Our advantages

- Apave Certification is recognised as a NCB\* in the CB scheme
- The Apave Group has test laboratories recognised as CBTL\*
- Expertise in standards in France and abroad (IEC, EN, UL, ...)



Apave Certification provides you with support for the certification of your products in France and abroad

## Our services

### The CB Certificate

Thanks to the recognition thereof by IECEE\*, Apave Certification issues test reports and CB conformity certificates, recognised by all other member bodies of the IECEE (except in the case of more restrictive national and local legislation), for many types of electrical and electronic products. These CB certificates form genuine passports for the international markets.

#### The advantages of the CB certificate :

- Facilitating access to the markets of the member countries of the IECEE (more than 50 countries)
- Access to foreign certification marks : the international system of recognition is based on a single approach and therefore reduces both testing costs and delays for putting on the market
- Guaranteeing product conformity, evaluated by a recognised body.

### International Certification

Apave provides you with support in obtaining international marks for markets as diverse as North America, South America, Asia (China, Japan, Korea...), Russia... Moreover, Apave Certification is approved by the American certifying body MET Labs, registered as NRTL\*, for conducting audits and obtaining the MET mark, certification issued for the markets in the USA and Canada.

### C by Apave mark

C by Apave : voluntary certification mark registered by Apave Certification accredited by COFRAC according to NF EN ISO/CEI 17065. This certifies that Apave Certification, an independent third party body, has evaluated then declared your products or services as compliant with a certification standard. Undertaking a voluntary certification approach is showing your desire to go beyond the regulatory requirements in order to offer your customers a high-quality electrical product.

Obtaining the certification C by Apave gives the holder the right to use an Apave mark that is identifiable and recognised.



### Other associated services

- Support for CE marking
- Compliance testing with applicable standards
- Electrical, mechanical, EMC, radio, etc. compliance testing by the laboratories of the Apave Group
- Certification of management systems
- Certification of persons and skills
- Labels and evaluations

More information on [www.apave-certification.com](http://www.apave-certification.com)



\* IECEE : IEC System of Conformity Assessment Schemes for Electrotechnical Equipment and Components / CB : Certification Body / NCB : National Certification Body / CBTL : Certification Body Testing Laboratory / NRTL : Nationally Recognized Testing Laboratory

If you've got a project in mind, don't hesitate to contact our team of experts :

Apave Certification  
Immeuble Canopy - 6 Rue du Général Audran - CS 60123  
92412 COURBEVOIE CEDEX  
Tél : +33(0)1 45 66 18 18

[apave.certification@apave.com](mailto:apave.certification@apave.com)  
[www.apave-certification.com](http://www.apave-certification.com)